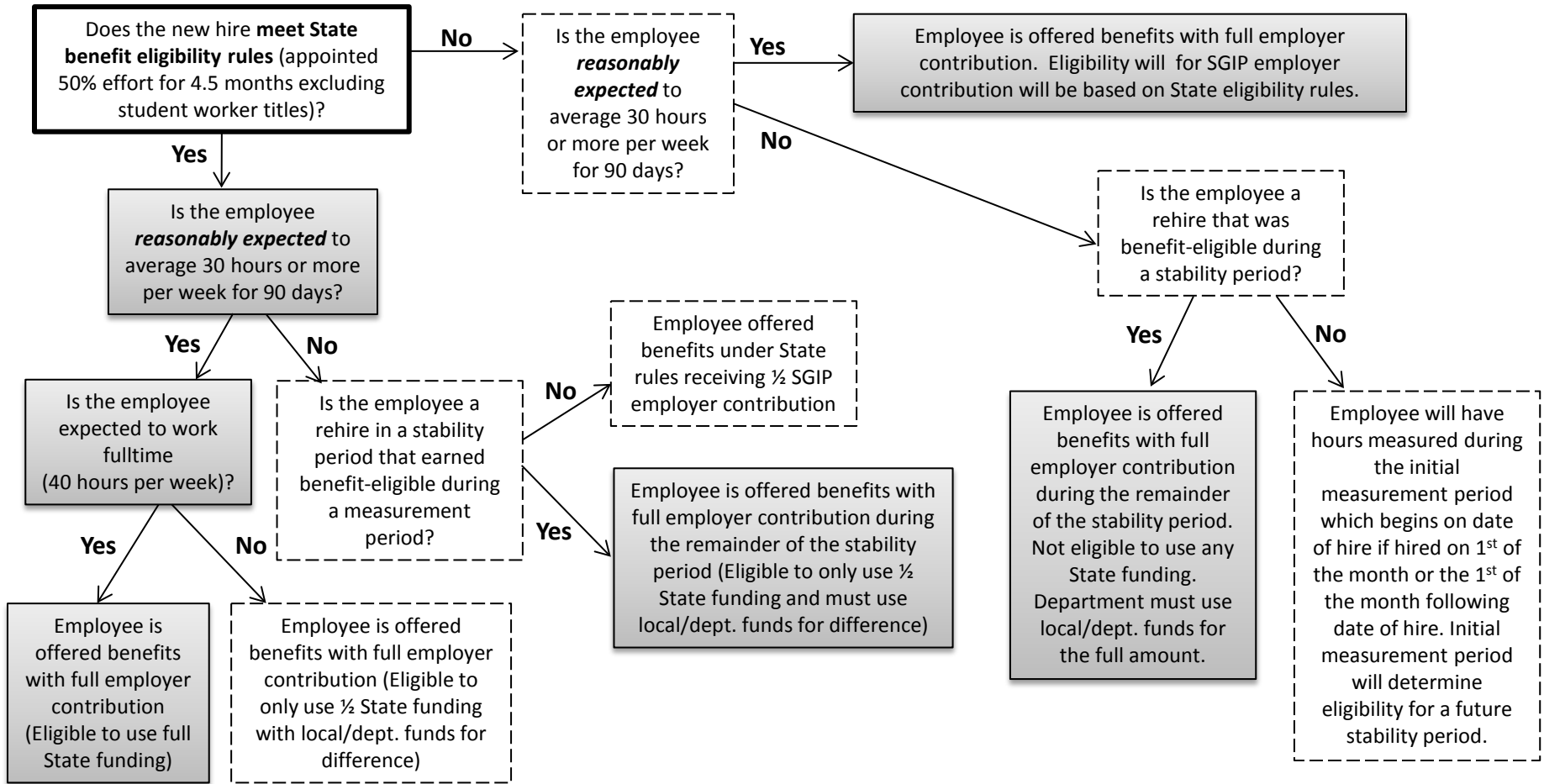


Determining Benefit Eligibility for New Hires/Rehires



NOTE:

- Benefit eligibility must be reevaluated if there is a change of status during the initial measurement period or with respect to breaks in service.
- Employees meeting eligibility through a measurement period (including budgeted fulltime employees) will receive benefits for the duration of the subsequent stability period without regard to actual hours worked/paid during the stability period provided their employment continues within the A&M System.
- Employees deemed benefit-eligible solely by reason of Affordable Care Act (ACA) will only be offered medical and basic life coverage.
- Visit employees.tamu.edu/benefits/affordable-care-act for more information and contact HR Benefit Services at 979-862-1718 for benefits@tamu.edu for additional guidance.